

# Polysmith® PSG

## New Systems & PC Upgrades

Configuration Guide



**THIS GUIDE IS  
INTENDED ONLY FOR  
QUICK REFERENCE  
FOR POLYSMITH® PSG  
USERS.**

**PLEASE REFER TO THE OPERATOR'S MANUAL  
FOR FURTHER DETAILS. FOR 24/7 TECHNICAL  
SUPPORT, CALL (800) 325-0283 AND FOLLOW THE  
VOICE PROMPTS TO SPEAK WITH ONE OF OUR  
TECHNICAL SUPPORT TEAM MEMBERS.**

# TABLE OF CONTENTS

<b>INTRODUCTION</b>	<b>2</b>
<b>UPGRADING YOUR PSG SYSTEM</b>	<b>4</b>
COPY SETTINGS	6
COPY MONTAGES (ONLY IF REUSING THE SAME AMPLIFIER)	7
COPY LOG EVENTS	8
COPY CUSTOM REPORTS	9
<b>SETTING UP YOUR PSG SYSTEM</b>	<b>10</b>
OBTAIN POLYSMITH LICENSE	12
LICENSING FROM CLOUD SERVER	13
STANDALONE LICENSE	13
ON-DEMAND LICENSE	13
LICENSING FROM USB KEY	14
STANDALONE LICENSE	14
ADD MONTAGES	15
PC UPGRADE	15
FOR NEW SYSTEMS	16
ADD LOG EVENTS (PC UPGRADES ONLY)	16
ADD REPORTS	17
CONFIGURE POLYSMITH SETTINGS	18
CAMERA SETUP	18
CONFIGURE NIC CARD FOR CAMERA	18
SETUP AXIS CAMERA (WINDOWS 10)	19
SETUP SONY CAMERA	21
CONFIGURE CAMERA IN POLYSMITH	21
AMPLIFIER SETUP	22
CONFIGURE NIC CARD FOR AMPLIFIER	22
CONFIGURE AMPLIFIER IN POLYSMITH	22
LOG INTO POLYSMITH DMS	23
ADD MONTAGES & SETTINGS TO DATABASE	23
TEST SYSTEM	24
DOMAIN & AUTOCOPY SETUP	25

# UPGRADING YOUR PSG SYSTEM

# UPGRADING YOUR PSG SYSTEM

Starting a PC swap or upgrade? Begin here. Setting up a new system? Go to PSG Configuration Guide (New Systems & PC Upgrades) on page 15.

## BEFORE YOU BEGIN

Ensure you have:

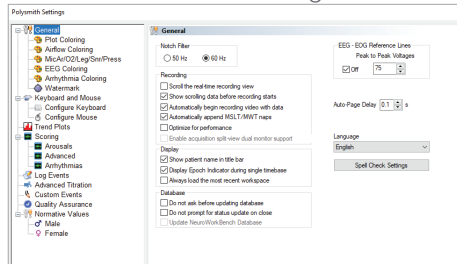
- Logged in as a local user using provided credentials.
- External drive or location for saving settings, montages, log events, and reports.

## COPY SETTINGS

01. Open Polysmith® 

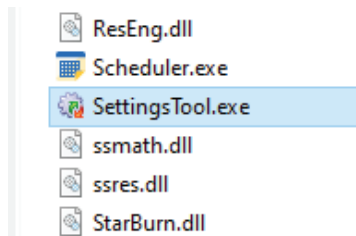
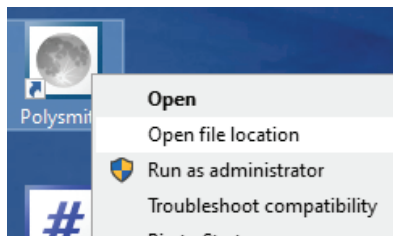
02. Go to **Settings** 

03. Capture photos or screenshots of all current settings for reference

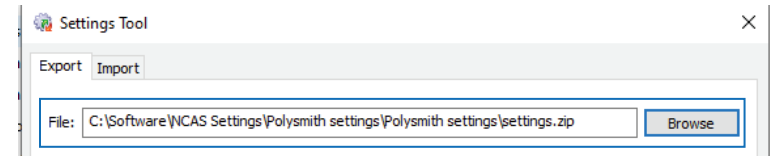


04. Open the Settings Tool file by right clicking on Polysmith

icon from the desktop then select **Open File Location**, scroll down to SettingsTool.exe

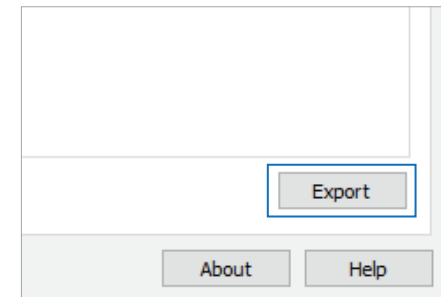


05. On the export page, browse to the location where you want to save settings



06. Select the settings for export, then click **Export**.

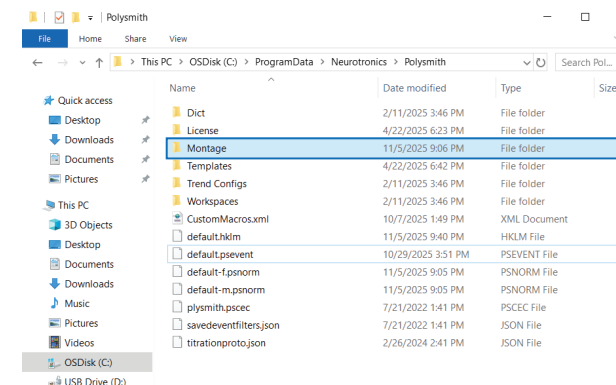
A .zip file is saved to the specified path. Successful exports show a checkmark in the log; unsuccessful exports show an “x.”



## COPY MONTAGES (IF USING THE SAME MONTAGE)

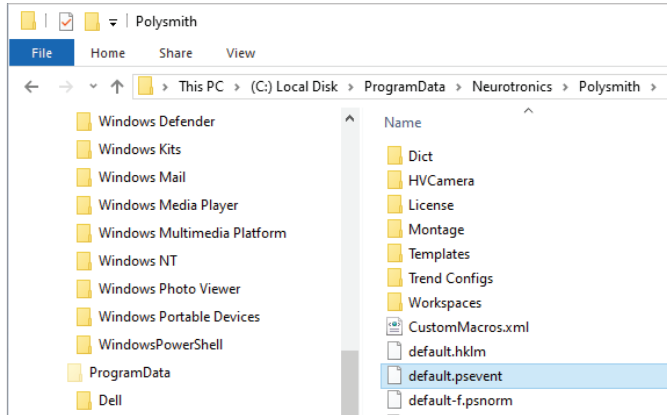
01. Navigate to: **C:\Programdata\Neurotonics\Polysmith**

02. Copy the Montage folder to USB or external drive

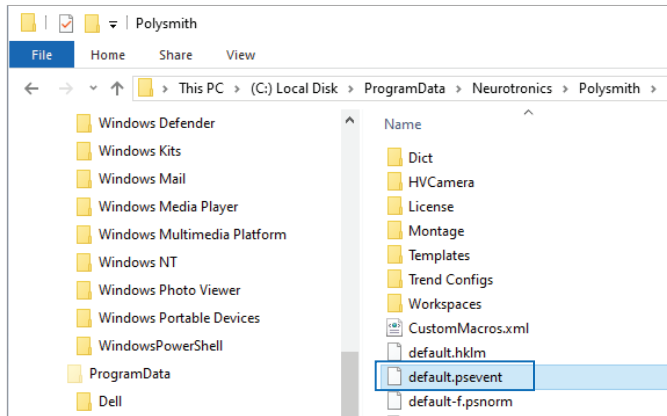


## COPY LOG EVENTS

01. Navigate to: **C:\Program Data\Neurotronics\Polysmith**



02. Copy **default.psevent** to external drive such as a USB flash drive.

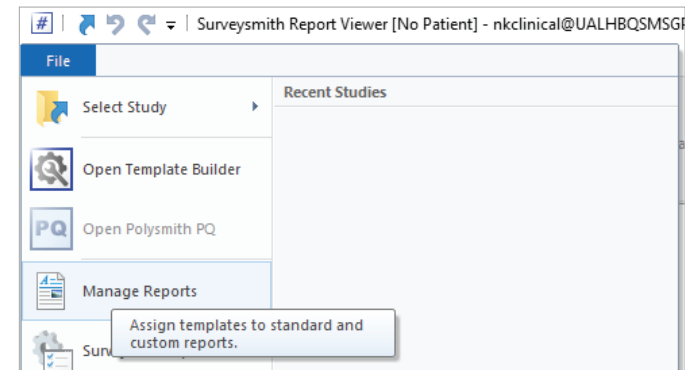


## COPY CUSTOM REPORTS

01. Open **Report Viewer**



02. Go to: **File → Manage Reports → Options / Export Report Settings**



03. Select a folder for export and name it. Note the paths for any report templates you need to transfer.

# SETTING UP YOUR PSG SYSTEM

# SETTING UP YOUR PSG SYSTEM

## BEFORE YOU BEGIN

Ensure you have:

- Logged in as a local user using provided credentials.
- External drive or location for saving settings, montages, log events, and reports.
- (For upgrades only) Completed all steps from the PC Upgrade section.


## OBTAIN POLYSMITH LICENSE

Polysmith requires a license from Neurotronics before all features are available. When first installed, Polysmith runs in a 30-day demo period.

To view current registration, navigate to:

Help → Product Registration → Software Registration Window

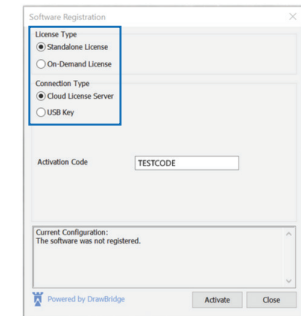
01. Open Polysmith 

02. Click the **Polysmith License** icon to open the Software Registration window 

## LICENSING FROM CLOUD SERVER

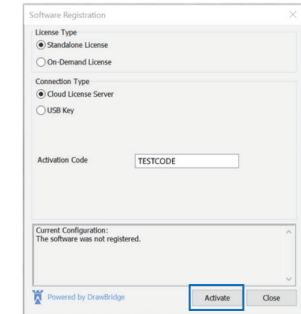
### Standalone License

1. Select **Standalone License** for License Type and **Cloud License Server** for Connection Type.



The dialog box shows the 'License Type' section with 'Standalone License' selected. The 'Connection Type' section has 'Cloud License Server' selected. The 'Activation Code' field contains 'TESTCODE'. The 'Current Configuration' section shows 'The software was not registered.' Buttons for 'Activate' and 'Close' are at the bottom right.

2. Enter the activation code then click **Activate**.

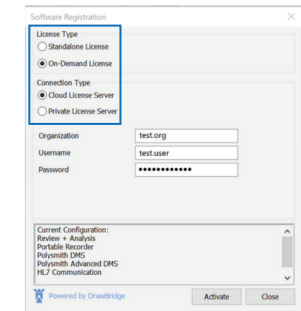


The dialog box is identical to the previous one, but the 'Activate' button is highlighted with a blue border.

3. Restart Polysmith for activation to take effect.

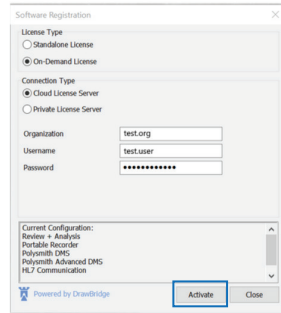
### On-Demand License

1. Select **On Demand License** for License Type and **Cloud License Server** for Connection Type.



The dialog box shows the 'License Type' section with 'On-Demand License' selected. The 'Connection Type' section has 'Cloud License Server' selected. There are input fields for 'Organization' (test.org), 'Username' (test.user), and 'Password' (masked with asterisks). The 'Current Configuration' section lists software features: Review + Analysis, Portable Recorder, Polysmith DMC, Polysmith Advanced DMC, and HL7 Communication. Buttons for 'Activate' and 'Close' are at the bottom right.

2. Enter organization name, username, and password then click **Activate**.

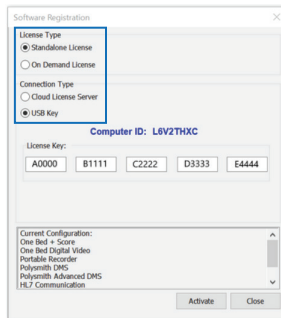


3. Restart Polysmith for activation to take effect.

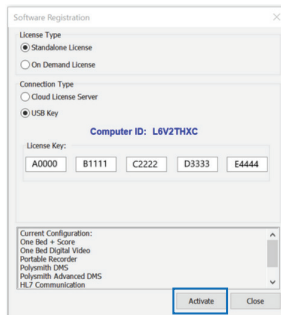
## LICENSING FROM USB KEY

### Standalone License

1. Select **Standalone License** for License Type and **USB Key** for Connection Type to obtain Computer ID. (For upgrades, include old PC serial number when contacting Neurotronics.)



2. Enter the activation code then click **Activate**.

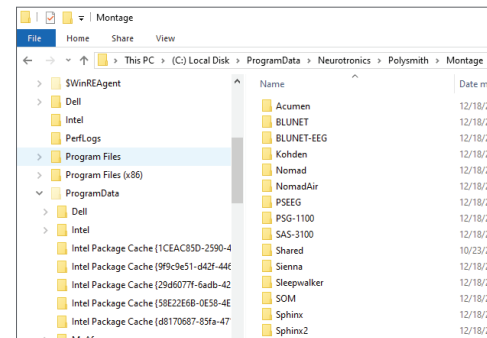


3. Restart Polysmith for activation to take effect.

## ADD MONTAGES

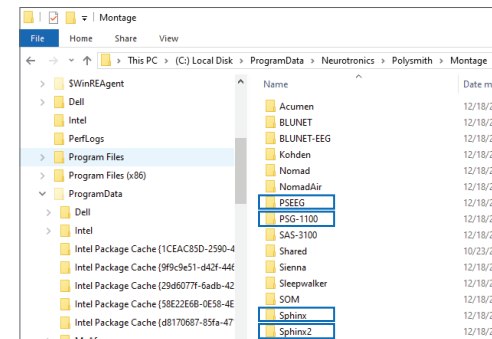
### PC Upgrade:

01. Navigate to:  
**C:\Program Data\Neurotronics\Polysmith\Montage**



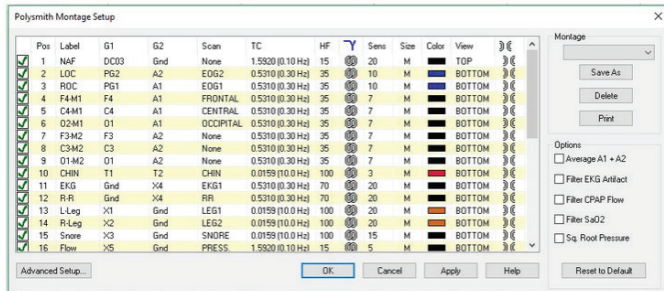
02. Copy montages from USB and paste into the appropriate amplifier folder

**NOTE:** For JE921 amplifier, folder name is **PSEEG**



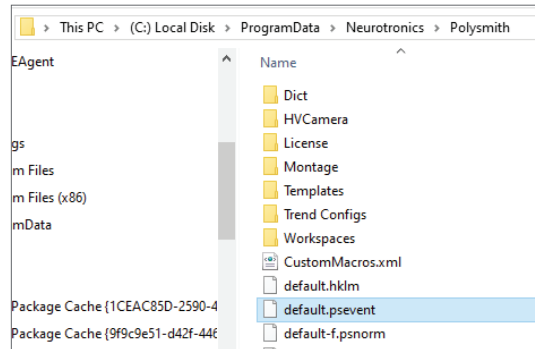
## For New Systems:

Open Polysmith → Montage icon → create new montages as needed.



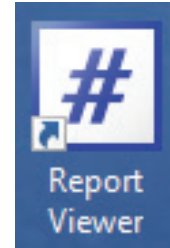
## ADD LOG EVENTS (PC UPGRADES ONLY)

- Navigate to:  
**C:\Program Data\Neurotronics\Polysmith**
- Paste **default.psevent** from USB

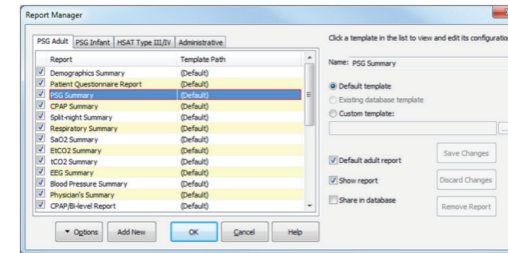


## ADD REPORTS

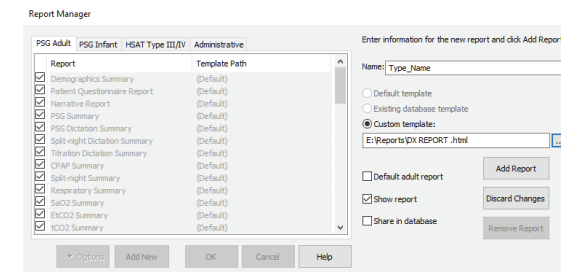
- Navigate to:  
**C:\Program Data\Neurotronics\Polysmith\Templates**
- Paste report files into Templates folder
- Open **Report Viewer**



- Open File → Manage Reports → Add New



- Browse to template folder, select template, type name then select **Share in Database** and OK



**NOTE:** Only one computer needs to add reports if studies are shared to a central database.

## CONFIGURE POLYSMITH SETTINGS

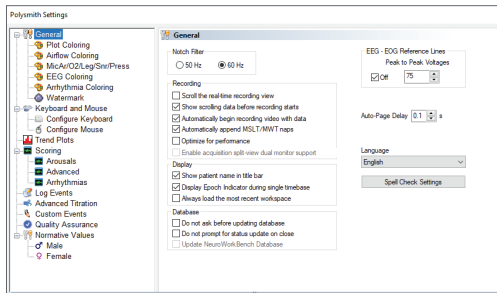
For new systems, review settings with lead tech or lab manager and adjust as needed.

For upgrades, copy settings from previous PC.

01. Open Polysmith → Settings



02. Enter and save settings



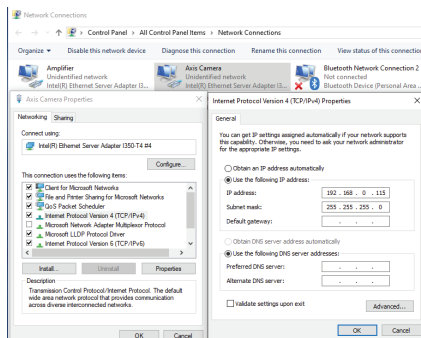
## CAMERA SETUP

### 1. Configure NIC Card for Camera

Navigate to: Control Pane → Network and Sharing Center → Change Adapter Settings → Right-click Camera → Properties → IPv4

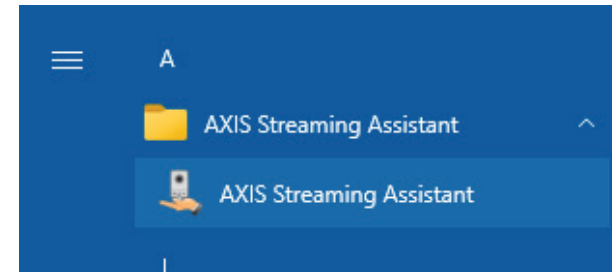
Use below or facility provided addresses:

- IP: 192.168.0.115
  - Subnet Mask: 255.255.255.0
- Click OK to save.

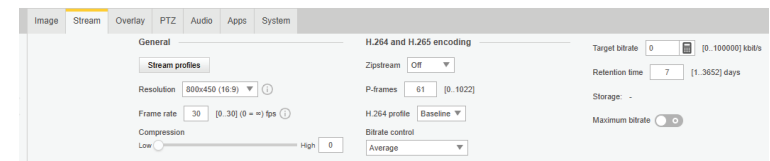


## 2. Setup Axis Camera (Windows 10)

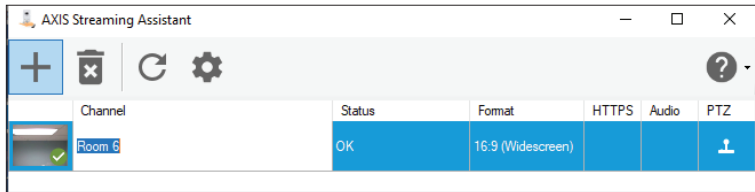
Configure the camera in Edge before opening Axis Streaming Assistant




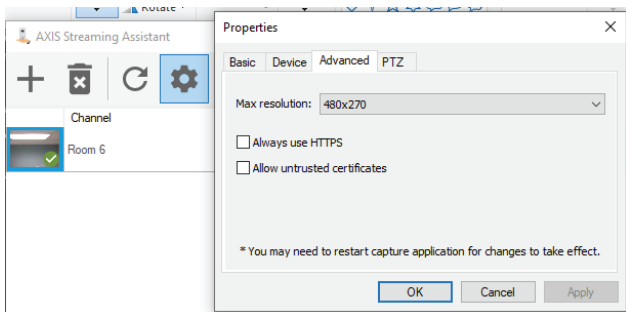
1. Open Microsoft Edge via Polysmith Support Icon → Enter camera IP
2. Log in (Username: root / Password: root)
3. Select Allow to load plugin
4. Setup → Basic → Users → HTTP/RTSP Password → Unencrypted only
5. Enable Anonymous viewer login, Anonymous PTZ control login, Basic setup → Save → OK
6. Live View Config → Stream Profile → H.264 → Save
7. System Options → Ports & Devices → LED → Off → Save
8. If camera is hanging, rotate image 180° under Video & Audio → Camera Settings → Save
9. Update camera URL in toolbar shortcut → Save → Verify works
10. Configure user, password, video stream, and LED settings per standard steps



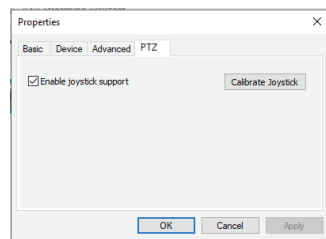
11. Check mark the box inside the camera window and change to the proper bed/room number



12. Click **OK**
13. Click on **INSTALL** and check mark all available boxes and click **INSTALL** and then **CLOSE**
14. Double click on the Open Channel Properties 
15. Click on the "Advanced" tab and choose 480x270



16. Click on the **PTZ** tab and check mark the **ENABLE JOYSTICK SUPPORT** box



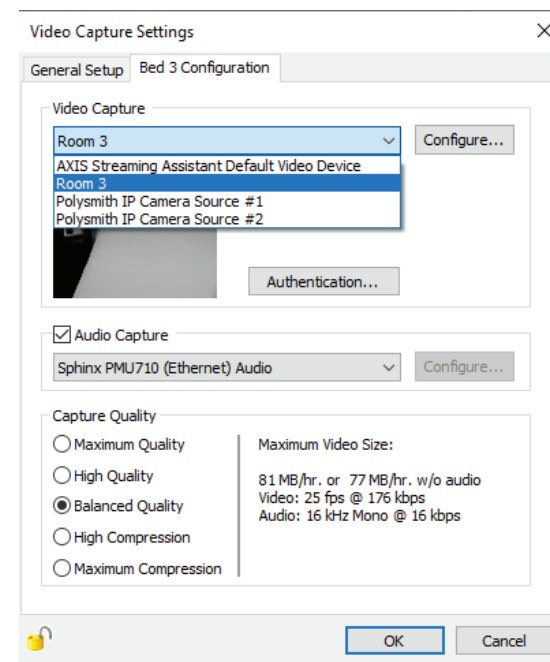
17. Click **APPLY** and then **OK**
18. Close the Axis Streaming Assistant

### 3. Setup Sony Camera

1. From NK Apps, open SNC Toolbox
2. Search for Camera → Select → Network
3. Login: admin / admin
4. Set IP: 192.168.0.100, Subnet: 255.255.255.0, clear Gateway/DNS, select OK to save.
5. Double-click camera → Open SNC Viewer → Adjust settings → Save URL to internet browser favorites.

### 4. Configure Camera in Polysmith

1. Open Polysmith → Configure Video → Select correct camera type (Sony/Axis/USB)
2. Check Audio Capture → select correct audio device → High quality → OK



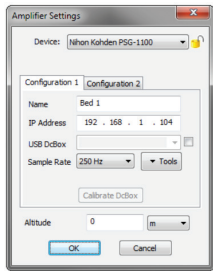
## AMPLIFIER SETUP

### 1. Configure NIC Card for Amplifier

Navigate to Windows Control Panel → Network & Sharing Center → Change Adapter Settings → Right-click Amplifier → Properties → IPv4 to set addresses:

Use below or facility provided addresses:

- IP: 192.168.1.155
  - Subnet Mask: 255.255.255.0
- Select OK to save.



*Image may not match settings, follow instructions as shown or use IP addresses assigned by your facility.*

### 2. Configure Amplifier in Polysmith

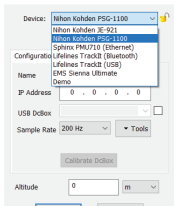
1. Open Polysmith



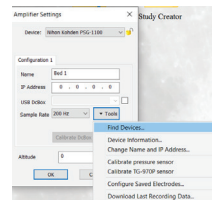
2. Click on Amplifier Configuration



3. Select amplifier



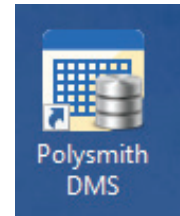
4. Click on Tools Drop-Down and click Find Amplifier



5. Select Amplifier and click OK

## LOG INTO POLYSMITH DMS

01. Open Polysmith DMS
02. Enter server instance and login (nkclinical / polysmith)
03. Select database then click OK to save and close DMS

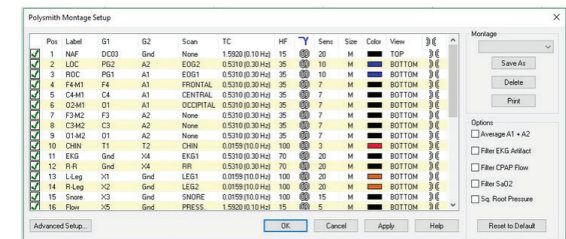


## ADD MONTAGES & SETTINGS TO DATABASE

1. Open Polysmith and select start a new record
2. Select the Montage Edit Icon



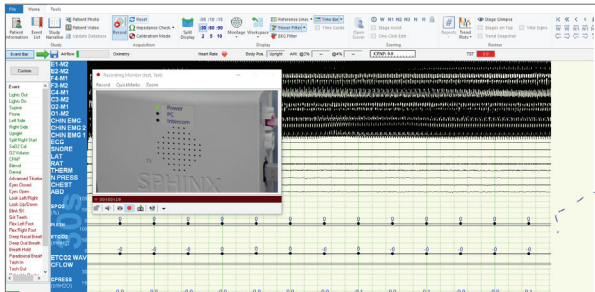
3. Select montage to **Send to Database** then select OK Repeat for each montage



## TEST SYSTEM

- Run a test study (see Polysmith 12/12.2 QRG)

- Verify amplifier, microphone, and video functions.



## DOMAIN & AUTOCOPY SETUP

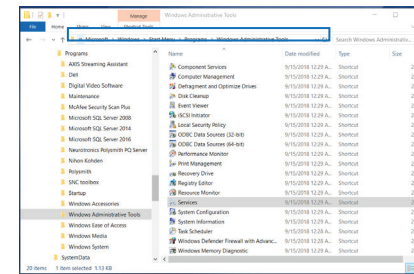
### Domain:

Add PC to domain and verify settings.

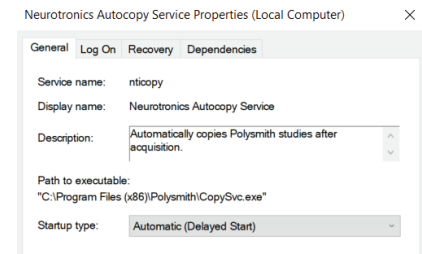
### AutoCopy Setup:

Set up AutoCopy to automatically store studies on a central server.

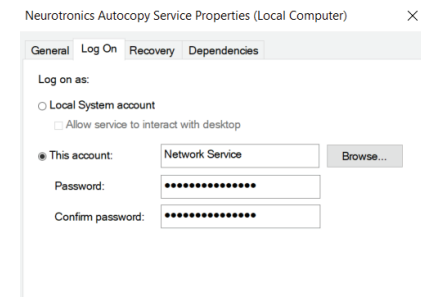
- Open Windows Administrative Tools → Services (services.msc)



- Locate Neurotronics Autocopy Service → set Startup type to Automatic (Delayed Start)

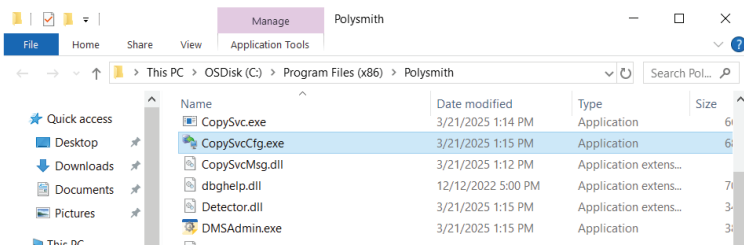


- Under Log On tab, enter service account credentials → OK



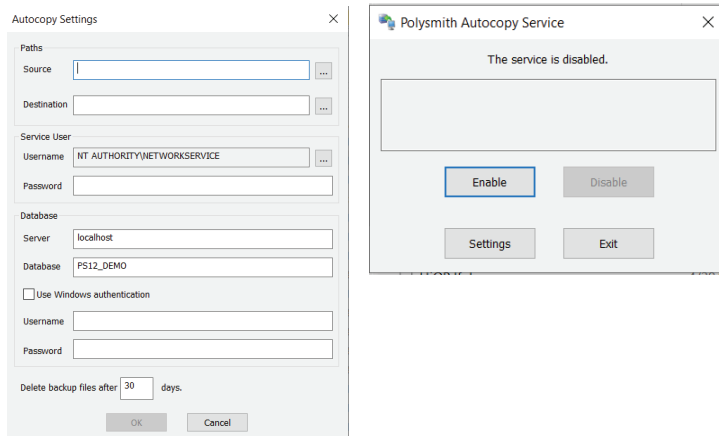
4. Open:

C:\Program Files (x86)\Polysmith\copysvccfg.exe



5. In Autocopy Settings, enter:

- o Source: D:\Data Files
- o Destination: Server path
- o Service User credentials → OK



## **NIHON KOHDEN AMERICA, LLC**

15353 Barranca Pkwy, Irvine, CA 92618, USA

**800.325.0283** [us.nihonkohden.com](https://www.us.nihonkohden.com)

[info@nixonkohden.com](mailto:info@nixonkohden.com)

### **Important Safety Information:**

Caution: Federal (United States) law restricts this device to sale by or on the order of a physician. See Instructions for Use for full prescribing information, including indications, contraindications, warnings, precautions, and adverse events.

Polysmith is a registered trademarks of Neurotronics, LLC. Both Neurotronics, LLC and Nihon Kohden America, LLC are wholly owned subsidiaries of Nihon Kohden North America, Inc.

All Rights Reserved.

MKT-01672[A]